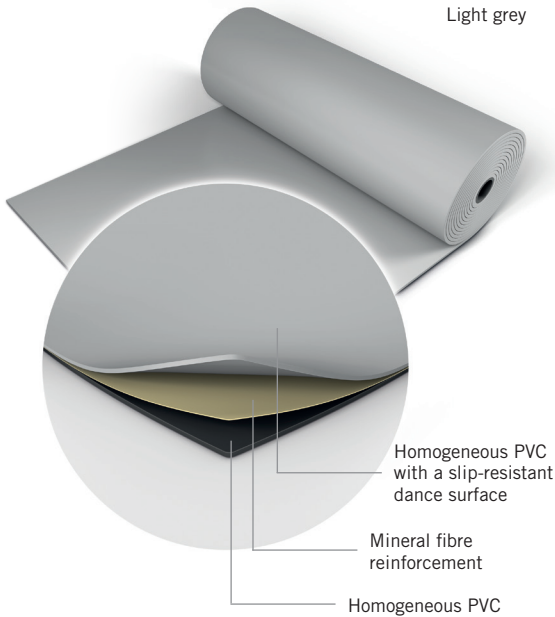




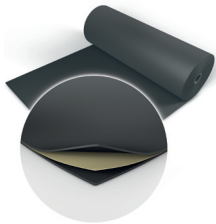
Light grey



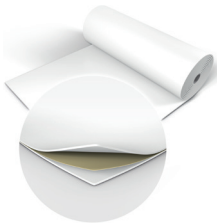
Black



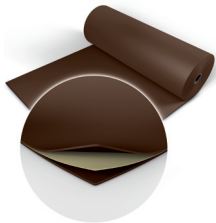
Dark grey



White



Hazelnut



Harlequin Cascade™

Harlequin Cascade still delights generations of professional dancers, artistic directors and technical and stage managers as the ultimate heavy-duty dance floor. The silky smooth embossed surface that's often described as giving 'warmth' to a performance, also provides deceptively good grip, as well as a high-quality base for lighting designers.

Harlequin Cascade is ideal for ballet, contemporary, modern and theatrical use, as well as aerobics, zumba, hip-hop, jazz, street, salsa, percussive including flamenco, Irish and tap, multi-purpose use, concerts and for operatic performances.

Harlequin Cascade is specified for loose-lay or permanent installation within dance institutions, dance studios, schools and theatres and is an excellent choice as the vinyl dance surface in conjunction with a Harlequin sprung floor.

Specification guide

Permanent or Portable	Both
Roll width	2m
Roll length	10m, 15m, 18m, 20m, 25m
Colours	Black, Light grey, Dark grey, Hazelnut, White
Thickness	2mm
Weight	2.6kg/m ²
Fire rating	Bfl-s1 (EN 13501-1)

Harlequin's vinyl floor application guide

In addition to Harlequin Cascade, we also produce a wide range of other vinyl floors, which are listed below.

✓ = We recommend.

	Aerobics/Zumba	Ballet	Ballroom/Salsa	Concerts	Contemporary	Display/Exhibition	Hip-Hop/Jazz/Street	Modern	Multi-purpose	Percussive* (Flamenco, Irish, Tap)	Theatre/Opera	TV
Allegro	✓				✓		✓	✓				
Cascade	✓	✓		✓	✓		✓	✓	✓	✓	✓	
Fiesta	✓		✓				✓		✓	✓	✓	
Hi-Shine				✓		✓					✓	✓
Marine				✓					✓	✓	✓	✓
Reversible	✓	✓		✓	✓	✓	✓		✓	✓	✓	✓
Showfloor				✓		✓						✓
Standfast	✓	✓			✓		✓	✓	✓	✓	✓	✓
Studio	✓	✓			✓		✓	✓				

* = Please ensure tap screws are fully tightened before use.

If you would like further information, advice and/or samples then please contact us.