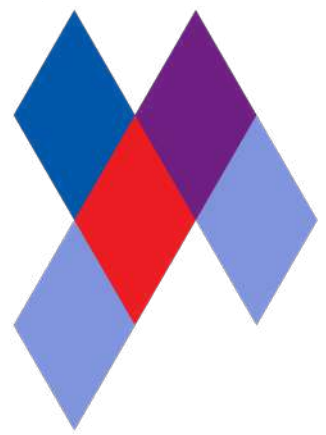


Harlequin Hi-Shine™



Harlequin Hi-Shine has a unique scratch resistant, high-gloss surface which creates a striking glossy, reflective surface. It is a hard-wearing and reusable vinyl floor, ideal for touring.

Installation: Harlequin Hi-Shine is specified for temporary 'loose-lay' installation, the joints are taped to create a continuous performance surface. It can be rolled out on any flat, smooth surface. It rolls out quickly, lays flat and stays flat.

Usage: Harlequin Hi-Shine is widely used for concerts and touring bands, film and television sets, fashion shows, product launches, parties, exhibitions, museums, window displays, theatrical and operatic productions and many other events.



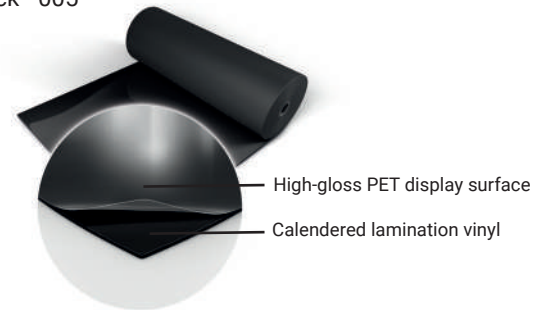
All Harlequin vinyl floors are 100% recyclable.

Specification Guide

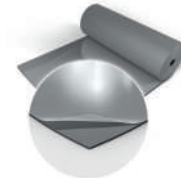
Material	Heterogeneous vinyl
Permanent or Portable	Portable
Roll Lengths	Metallics & Colours - 10m, 15m, 20m, 30m Blue - 10m, 20m
Roll Width	1.5m
Thickness	1.5mm
Weight	1.96kg/m ²
Finish	Smooth
Fire Rating	Bfl-s1 (EN 13501-1)
Warranty	2 years
Impact Sound Reduction	3dB
Fixing Type	Tape
Seams	Taped
Gloss Level	High gloss
Lightfastness	≥6
Recycled Content	23-30%
VOC Emissions	≤0.5mg/m ³
Recyclability	100%
Underfloor Heating	Not suitable for use with underfloor heating
Third Party Certification	Environmental Product Declaration A+ LEED, BREEAM, REACH Compliant

Available Colours:

Black - 005



Grey - 002



White - 019



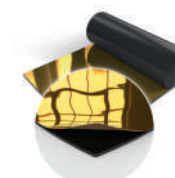
Red - 038



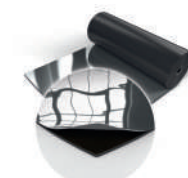
Blue - 039



Metallic Gold - 050



Metallic Silver - 025





Who performs
on Harlequin
Hi-Shine™

PANDORA



THE LONDON
PALLADIUM



PRADA

SELFRIDGES & CO

After Love - © Decland Colohan

If you would like further information or advice please contact us on
+852 254 11 666 or hksales@harlequinfloors.com

The Company reserves the right to make any variation in design or construction of the material described. Harlequin® is a registered trademark of British Harlequin plc. © Harlequin Floors 09/2024



HARLEQUIN
www.harlequinfloors.com