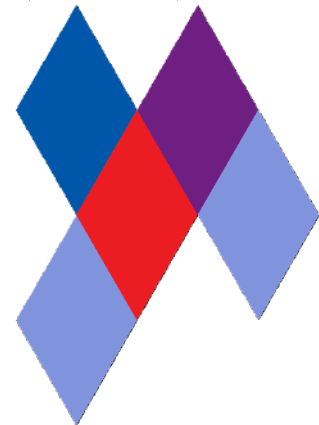


Harlequin Liberty HDTM




Harlequin Liberty HD is a development of our renowned Liberty sprung floor panel system, designed with enhanced durability in mind for more challenging environments. Harlequin Liberty HD is a birch plywood sprung floor panel system featuring shock dampening dual-density elastomer pads. The panels are coated with a black polymer resin, with a textured, high-grip pattern on the top surface which is high-wear, slip-resistant and weatherproof. The panels join using a rounded tongue and groove and are secured in place using our proprietary 'one turn of the key' latch and lock mechanism. Harlequin Liberty HD provides consistent shock dampening across the floor and offers the same feel and energy return to one or several dancers.

Performance surface: Harlequin Liberty HD can be used with a variety of Harlequin performance vinyls. Edge trims and ramps are available if required. For easy storage and transportation please see Harlequin's panel cart.

Installation: Harlequin Liberty HD is designed for both permanent or portable installation. The panels are laid in a 'brickwork fashion' onto the sub-floor so that cross joins do not coincide.

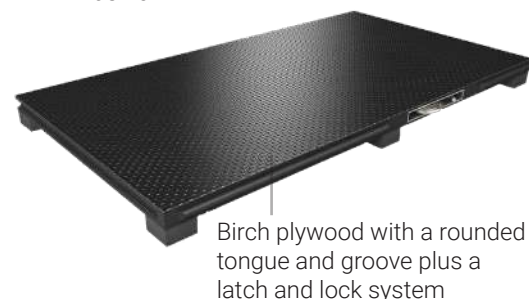
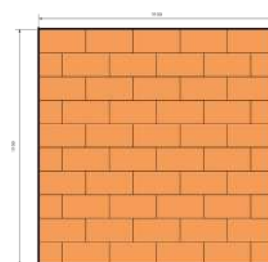
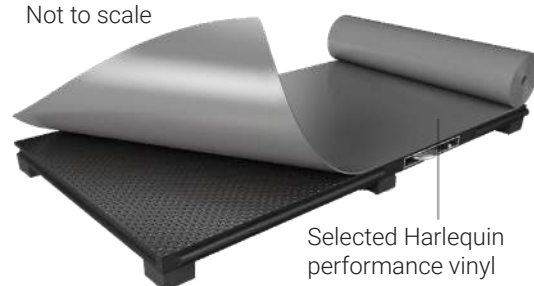
 All Harlequin wooden sprung floors are 100% recyclable.

 Harlequin sprung floor panel systems are extremely durable and are designed to be reused many times.

Specification Guide

Permanent or Portable	Both
Panel Size	2m x 1m & 1m x 1m
Minimum Floor Thickness (before inclusion of chosen surface)	37mm
Weight	12.5kg/m ² (Without surface)
Testing Standard	BS EN 14904:2006
Shock Absorption	67%
Vertical Deformation	4.1mm
Area Deflection	12.8%
Rolling Load	>1500 N
Testing Standard	BS EN 1991-1-1:2002
Point Load	>3.60kN
Uniform Distributed Load	>10.00kN
Fire Rating	Bfls 1 to EN 13501
Impact Generated Sound Level within room (Lw)	104.20dB
Thermal Resistance - R Value	1.52 m ² K/W
Thermal Insulation - U Value	0.658 W/m ² K
Category of Use	A4
VOC Emissions	<0.10 mg/m ³
Warranty	10 years if installed by Harlequin 5 years if installed externally
Installation	Installed by Harlequin or the customer
Underfloor Heating	Suitable for use with underfloor heating

Not to scale



HARLEQUIN
www.harlequinfloors.com

LONDON ♦ LUXEMBOURG ♦ BERLIN ♦ MADRID ♦ PARIS ♦ LIEGE ♦ PHILADELPHIA ♦ LOS ANGELES ♦ FORT WORTH ♦ SYDNEY ♦ HONG KONG ♦ TOKYO

Harlequin Liberty Accessories

The Harlequin Liberty sprung floor panel system has a range of accessories that complement the floor both practically and aesthetically. **Ramps, corner pieces and edge trims** can be used around the perimeter of the floor area to enable easy access on to the floor, eliminate trip hazards and hide the lock and latch mechanism. The accessories are made from a birch plywood coated with a textured black paint, they come in left and right-handed sections with corresponding latches and receivers.

Ramps & Corner Pieces: For use in situations where the sprung floor does not extend to the walls of the studio and for door thresholds. The ramps are DDA compliant.

Ramps:

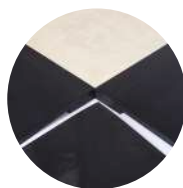
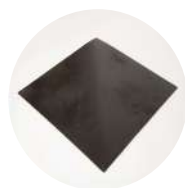
Specification Guide

Depth	420mm
Length	1m & 2m
Height	37mm

Corner Pieces:

Specification Guide

Depth	420mm
Length	420mm
Height	37mm



Edge Trims: For use in situations where the sprung floor does not extend to the walls of the studio and for door thresholds.

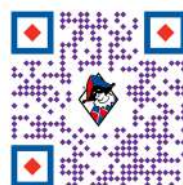
Standard edge

Depth	65mm
Length	1m & 2m
Height	37mm



Extra long (right/left)

Depth	65mm
Length	2.06m
Height	37mm



Harlequin Liberty Panel Cart: The Harlequin Liberty panel cart enables the safe storage and handling of 22 Harlequin Liberty sprung floor panels. The cart is easy to manoeuvre with non-marking braked wheels.



- Stores up to 22 full size (2m x 1m) Harlequin Liberty sprung floor panels
- Constructed from black scratch-resistant, powder-coated steel
- Fitted with four heavy-duty swivel castors with braeks and non-marking polyamide wheels
- Forklift pockets for side lifting

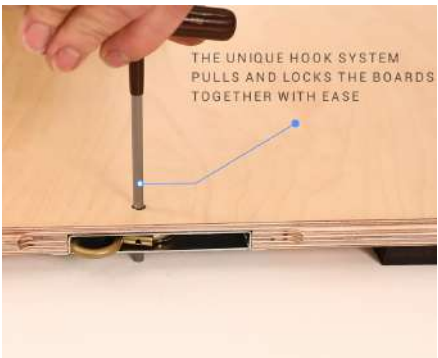
Specification Guide

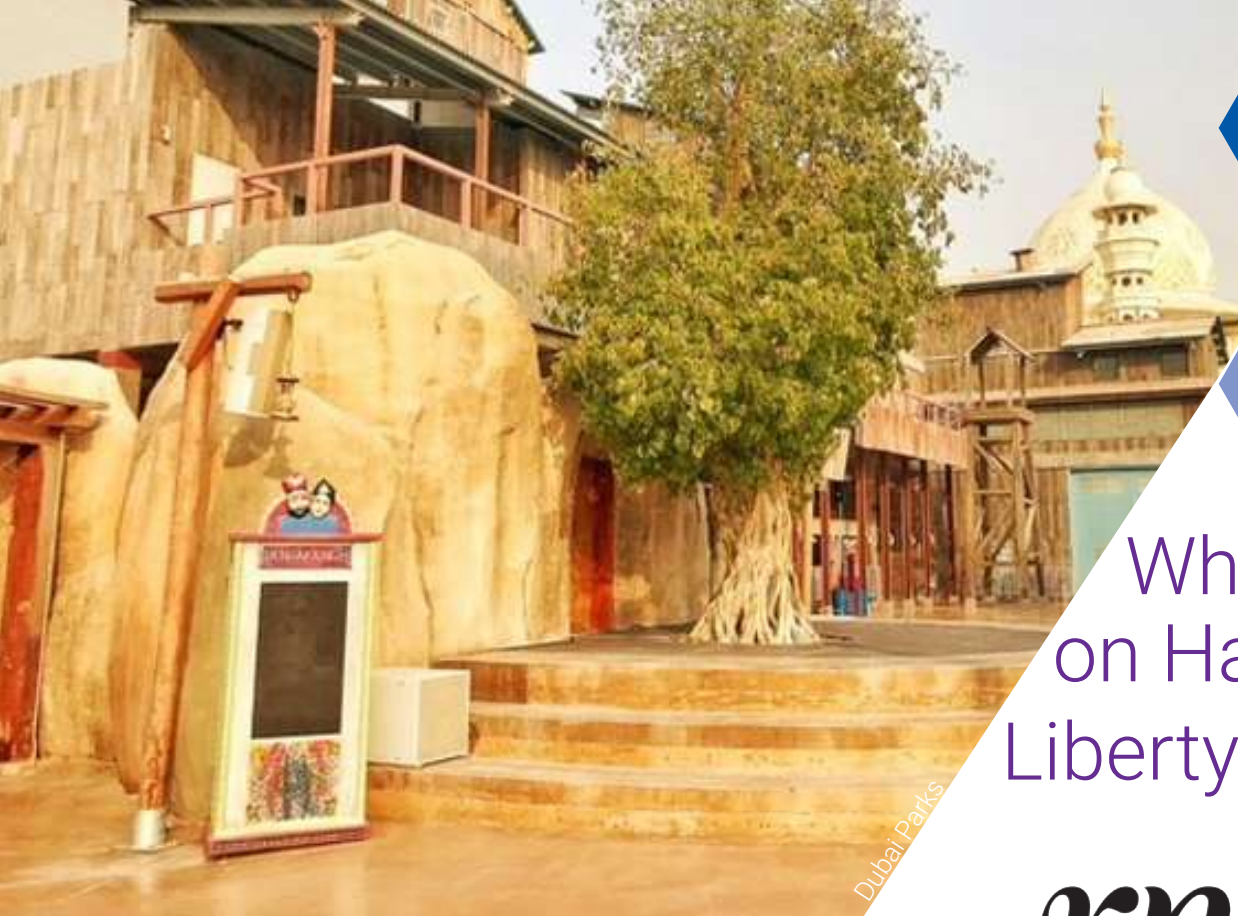
Width	1270mm
Length	2025mm
Height (For Panels)	993mm
Total Height	1211mm
Weight	Approximately 112kg



Latch Key:

The panels join using a rounded tongue and groove and are secured in place using our proprietary 'one turn of the key' latch and lock mechanism.





Dubai Parks



Who dances
on Harlequin
Liberty HD™

rnzb
ROYAL NEW ZEALAND BALLET



Royal New Zealand Ballet

ABT
AMERICAN BALLET THEATRE



DET KGL. TEATER

elmhurst
ballet school
IN ASSOCIATION WITH BIRMINGHAM ROYAL BALLET



Royal New Zealand Ballet

NEW
ZEALAND
SCHOOL
OF
DANCE

دبي
پارکس
AND RESORTS

If you would like further information or advice please contact us on

+852 2541 1666 or hksales@harlequinfloors.com

The Company reserves the right to make any variation in design or construction of the material described. Harlequin® is a registered trademark of British Harlequin plc. © Harlequin Floors 07/2024



HARLEQUIN
www.harlequinfloors.com