



HARLEQUIN
www.harlequinfloors.com

A guide to

EVENT & PRODUCTION FLOORS



STEP INSIDE A WORLD OF PERFORMANCE

The world performs on Harlequin floors

Björk's Cornucopia
Harlequin Hi-Shine | Harlequin Bespoke Printed
© Santiago Felipe courtesy of The Shed



WARNER BROS.



STAR CRUISES



Mercedes-Benz



澳門銀河



Established in England in 1977, Harlequin is the world leader in advanced technology floors for performing arts, theatres, events and productions.

Harlequin's experience and reputation are founded on the design, manufacture and supply of a range of high quality portable and permanent sprung and vinyl floors, preferred by performers at the world's leading venues.

Harlequin's event and display floors are the industry choice for TV and film production, concerts and tours, product

launches, fashion shows, window displays and exhibitions.

Forty years after its creation, Harlequin is the global leader in its field with operations across Europe (London, Luxembourg, Liège, Berlin, Paris and Madrid), Asia Pacific (Hong Kong, Japan and Sydney) and the Americas (Philadelphia, Los Angeles and Forth Worth).



CIRQUE DU SOLEIL



PANDORA™



SUSTAINABILITY

Harlequin is committed to sustainable development and our corporate responsibility in this area forms a fundamental part of our business strategy.

We continually monitor the environmental impact of our manufacturing processes and operations and work closely with partners, customers and suppliers to ensure that we continue to develop sustainable practices, products and services.

We provide business-wide training, advice and information to all team members to encourage the development of new environmental initiatives within the workplace. All departments are committed to reduce unnecessary waste by re-use and recycling.

We will continually review and, where possible, implement more energy efficient processes in our own production and those of our suppliers.

Harlequin's sustainability plan will be reviewed annually to demonstrate our ongoing commitment to reduce carbon emissions across our operations and to improve our overall sustainability.

Harlequin Wood Flooring

- All timber used by Harlequin is responsibly sourced from sustainable well managed forests that are either FSC or PEFC certified.
- Harlequin have demonstrated their commitment to sustainability by gaining FSC 'Chain of Custody' Certification.



Harlequin Vinyl Flooring

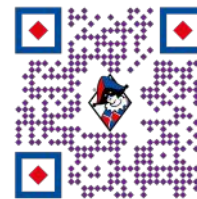
- All Harlequin vinyl flooring products achieve the highest BRE Green Guide rating of A+
- All raw materials used in the manufacture of Harlequin vinyl flooring are REACH (Registration, Evaluation, Authorisation and Restriction of Chemicals) compliant and do not contain any SVHC (Substances of Very High Concern) in concentrations greater than 0.1% (w/w)
- All Harlequin vinyl flooring products contain no category 1 or 2 CMR (Carcinogenic, Mutagenic, Reprotoxic) substances.
- All Harlequin vinyl flooring products are free from formaldehyde and are classified as conforming to Class E1.
- All Harlequin vinyl flooring products have been tested for VOCs, achieving Intertek's Clean Air Gold Certification for emissions and complying with both BREEAM (Building Research Establishment Environmental Assessment Method) and LEED (Leadership in Energy & Environmental Design) requirements for good air quality.
- All Harlequin vinyl flooring is 100% recyclable.
- All Harlequin vinyl flooring contains between 23% – 30% post manufacture recycled content.
- Harlequin conforms to the recommendations of Vinyl Plus, the European PVC industry's commitment to sustainable development.
- Harlequin runs a proactive 'Take Back' scheme under which products from post installation and post use are recycled into second life products.

BREEAM®



CERTIFIED
CLEAN AIR GOLD

Find our full Sustainability Policy
Statement here:



WHO WE WORK WITH

Harlequin manufactures, supplies and installs the world's best performance floors and stages in international opera houses and theatres, dance companies, performing art schools, global events, TV & film productions, cruise ships and leisure venues.

Harlequin is the flooring choice of leading stage production companies including Brilliant Stages, Stufish and Scott Fleary productions Ltd to create the perfect stage for multiple A-list celebrity tours, concerts and performances.

THE NEXT
STAGE

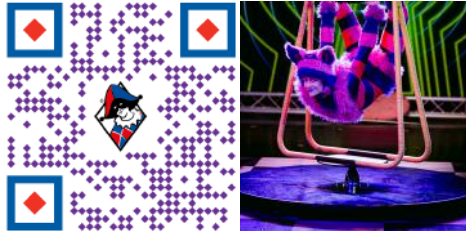
STUFISH

sf scottfleary
the creative construction company

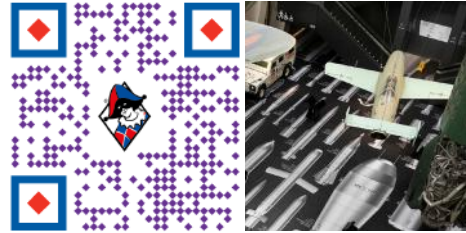
Litestructures

TAIT

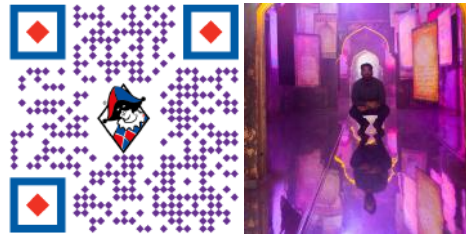
TAG Live



Imperial War Museum



Soul City Arts



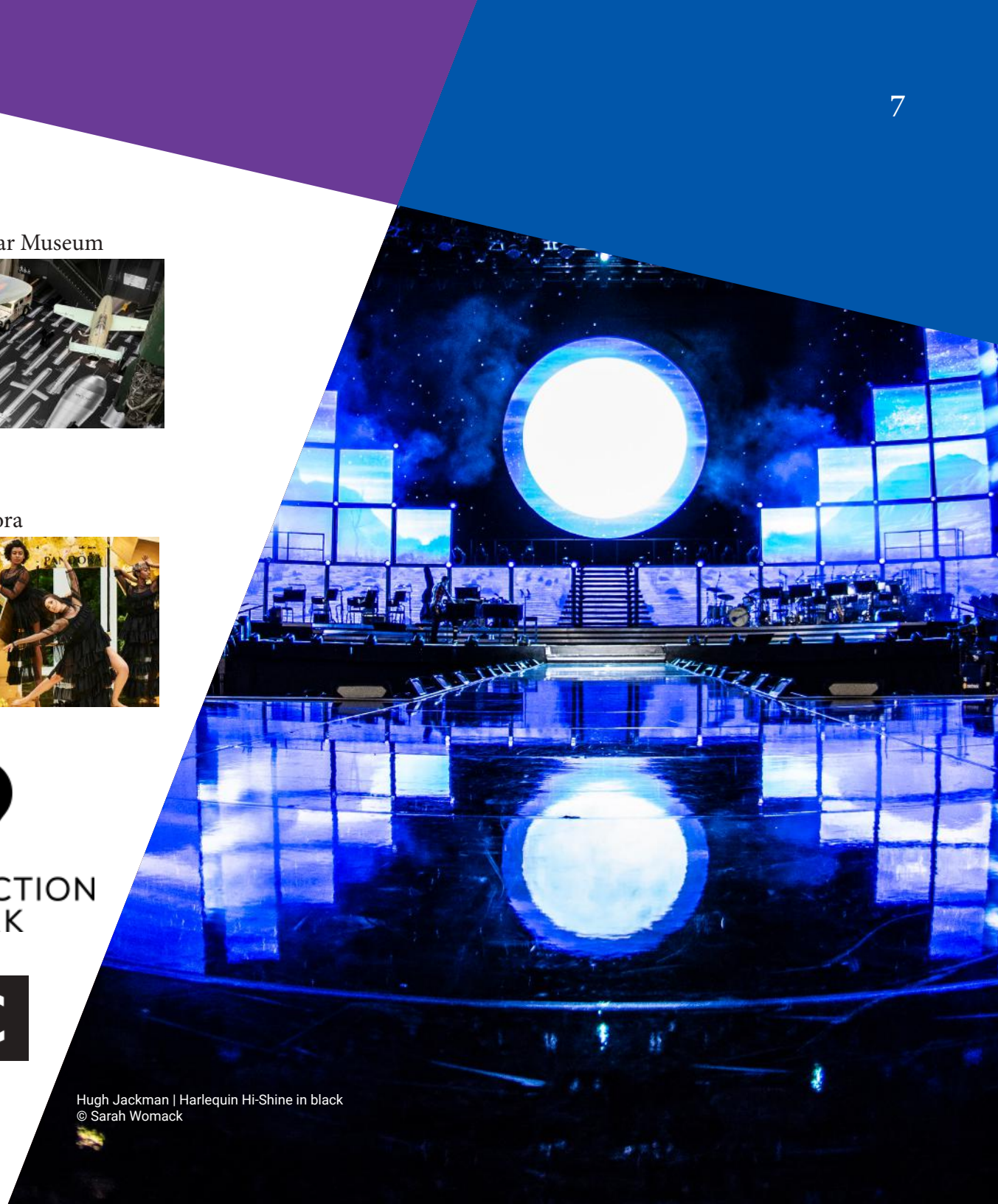
Pandora



PRODUCTION
PARK



Hugh Jackman | Harlequin Hi-Shine in black
© Sarah Womack



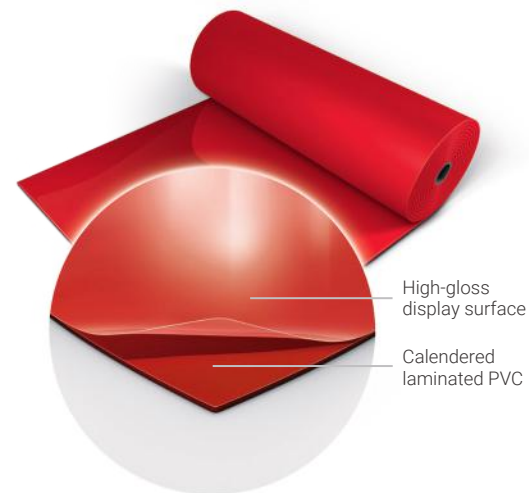
Harlequin Hi-Shine

A BRILLIANT CHOICE

Harlequin Hi-Shine is widely used for TV and film production, concerts and tours, product launches, fashion shows, window displays and exhibitions. It is the floor of choice for artists including Little Mix, One Direction, Lady Gaga, Will.i.am, Michael Bublé, Take That, Hugh Jackman, Kylie and Björk and has been used on numerous TV shows including The X Factor and Britain's Got Talent.

A Harlequin Hi-Shine floor is a brilliant choice for any occasion. Harlequin Hi-Shine has a unique high gloss display surface which provides a breath-taking reflective finish with excellent scratch-resistance. It is specified for loose-lay installation and rolls out easily on any flat, firm surface.

Red - 038



Black - 005



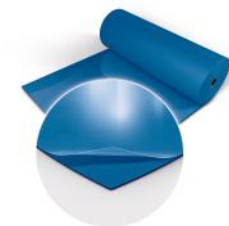
Grey - 002



White - 019

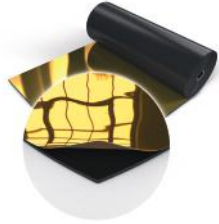


Blue - 039



Harlequin Hi-Shine Metallic

Gold - 050



Silver - 025



The Hi-Shine metallic range, in Gold and Silver, is the latest addition to the Harlequin Hi-Shine range of floors. A worldwide hit with producers of TV shows, set designers, touring bands and fashion shows, these new high impact colours bring another dimension to the brilliant look of Harlequin Hi-Shine.

Specification Guide

Permanent or Portable	Portable
Roll width	1.5m
Roll lengths	10m, 15m, 20m, 30m
Colours	Black, White, Red, Blue, Grey, Gold, Silver
Thickness	1.5mm
Weight	1.96kg/m ²
Fire rating	Bfl-s1 (EN 13501-1)

Aint Misbehavin' | Harlequin Hi-Shine in gold
© Pamela Raith





TV Production | Bespoke Printed Harlequin Cascade



Australian Ballet
Bespoke Printed Harlequin Clarity | Harlequin Hi-Shine



Studio Wayne McGregor
Bespoke Printed Harlequin Cascade

Harlequin Bespoke Printed Floors

A FRESH LOOK FOR ANY EVENT

Have you ever thought of having a totally unique floor for your event or display? Well now you can with Harlequin's vinyl printing service.

A printed finish is available on Harlequin Cascade, Harlequin Reversible / Reversible Pro and Harlequin Clarity.

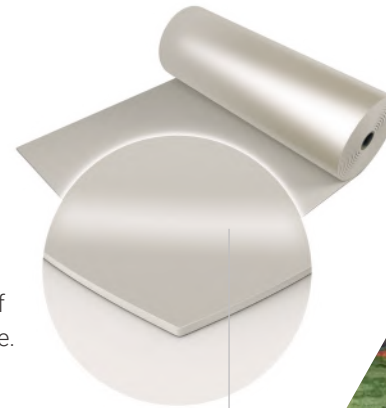
You can have a completely bespoke design or select from our image library.

- Top surface printing
- RAL colour matching available
- Eco-friendly, solvent-free UV cured inks mean very rapid drying times
- Excellent ink adhesion to the substrate gives a durable, abrasion resistant surface
- The fire rating of the Harlequin floor is unaffected
- Free samples available on request

Companies who have selected Harlequin Printed Vinyl floors: Bolshoi Ballet, Studio Wayne McGregor, Matthew Bourne's New Adventures, The Australian Ballet, Versace Hotel, Mercury Theatre, National Theatre, Royal Opera House and many more.

Harlequin Clarity

Harlequin Clarity is a durable clear vinyl flooring with an embossed texture suitable as a dance surface and for high traffic commercial use. It is specially formulated for bespoke reverse digital printing. The printed design is on the underside of the floor and so protected from wear and damage. Reverse printing is a two-stage process with the colour printed first then overlaid with a white background. Harlequin Clarity can also be used as a clear protective wear layer which allows the floor underneath to show through. Harlequin Clarity has the highest abrasion classification available and is a multi-purpose vinyl used for concerts, operatic performances and high traffic commercial purposes.



Homogeneous PVC with a slip-resistant dance surface



Jean-Michel Jarre, live tour 2016. Photo courtesy of Louis Hallonet Harlequin Reversible black/grey

Harlequin Reversible

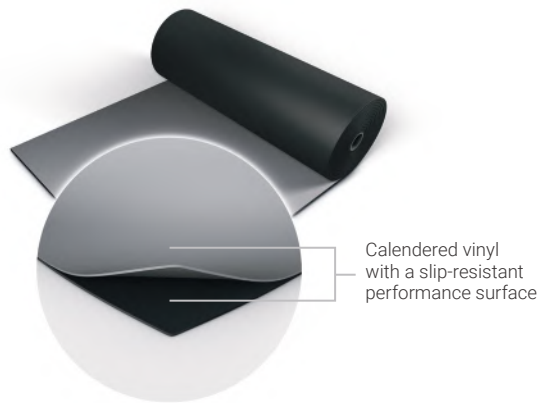
MADE TO PERFORM



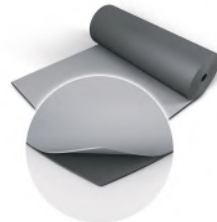
Launched over four decades ago, Harlequin Reversible is the original double-sided dance and stage floor. It is a hardwearing yet lightweight calendared vinyl that is slip resistant on both sides, so providing two floors in one!

Harlequin Reversible is our most versatile loose-lay floor and it is extremely popular among our broad range of customers across the world. It's ideally laid on any hard, smooth surface and is particularly suited to touring due to ease of handling and portability. Special wear coats on both surfaces make it easy to maintain.

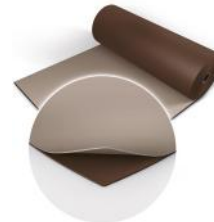
Black/Grey - 004



Dark grey/Light Grey - 003



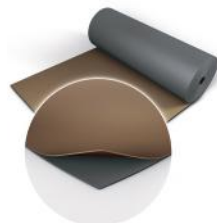
Hazelnut/Beige - 310



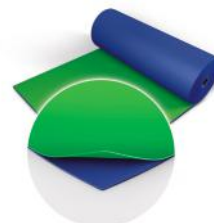
Black/White - 001



Fog/Tan - 890



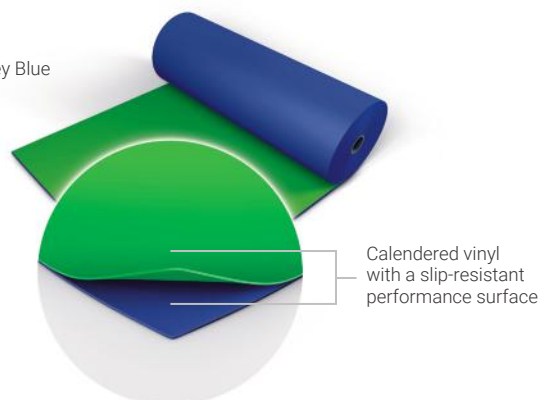
Chroma Key Green/
Chroma Key Blue - 119



Red/Black - 302



Chroma Key Green/Chroma Key Blue



Harlequin Reversible Chroma Key Green/Chroma Key Blue

Harlequin's Chroma Key Reversible vinyl is designed specifically for digital compositing with one side Chroma Key Green and the other Chroma Key Blue. Harlequin's Chroma Key Reversible vinyl is a practical solution for filmmakers

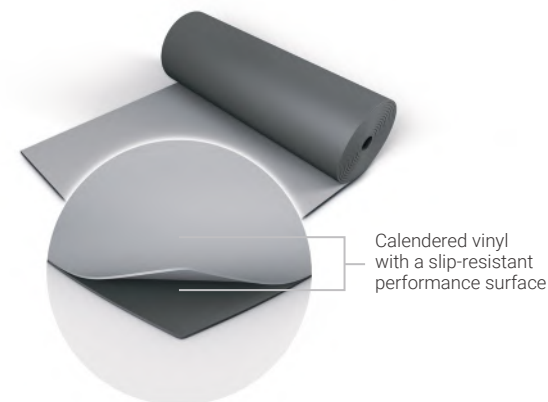
and television producers as both a floor and backdrop. It offers an alternative method to painting and repainting studio floors each time there is a Chroma key requirement for superimposing footage using editing packages.

Specification Guide

Permanent or portable	Portable
Roll width	2m
Roll lengths	10m, 15m, 18m, 20m, 25m
Colours	Chroma Key Green/Blue, Black/Projection Grey, Dark Grey/Light Grey, Black/White, Black/Grey, Fog/Tan, Hazelnut/Beige, Red/Black
Thickness	1.3mm
Weight	1.6kg/m ²
Fire rating	Bfl-s1 (EN 13501-1)

Harlequin Reversible Black/Projection Grey

Harlequin's Reversible Black/Projection Grey vinyl absorbs ambient light and delivers a more vivid projection of images on to the vinyl surface. Contrast ratios are enhanced, ensuring less light bleed and less unwanted reflective light. As the leading product on the market for peak gain measurement, Harlequin's Projection Grey provides higher brightness and a wider viewing angle for audiences, through front projection. This is a practical solution for film, TV and theatre production.



Projection Grey/Black - 005

Harlequin Reversible Pro

Harlequin Reversible Pro retains the same slip-resistant surface on both sides as our standard Reversible but, thanks to the introduction of a new mineral fibre interply layer, offers even more dimensional stability, making it an ideal surface for printing.

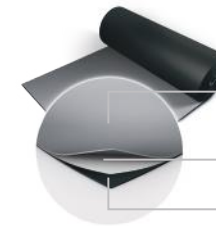
Suitable for a wide variety of uses including ballet, contemporary, percussive dance including flamenco, Irish and tap, multi-purpose use, hip-hop, jazz, street, aerobics, zumba, concerts, display, exhibitions, television, theatres and for operatic performances.

- Heavy duty
- Highly portable and easy to handle
- Quick to roll out and lays flat

Black/White - 001



Black/Grey - 004



Calendered vinyl with a slip-resistant performance surface

Woven mineral fibre reinforcement

Calendered vinyl

Specification Guide

Permanent or portable	Both
Roll width	2m
Roll lengths	10m, 15m, 18m, 20m, 25m, 30m
Colours	Black/White, Black/Grey
Thickness	1.5mm
Weight	2.25kg/m ²
Fire rating	Bfl-s1 (BS EN ISO9239-1:2010) Compliant (BS EN ISO 11925-2:2010) Class 1 (ASTM E648-10)

Harlequin Showfloor

SHOWTIME IN NO TIME

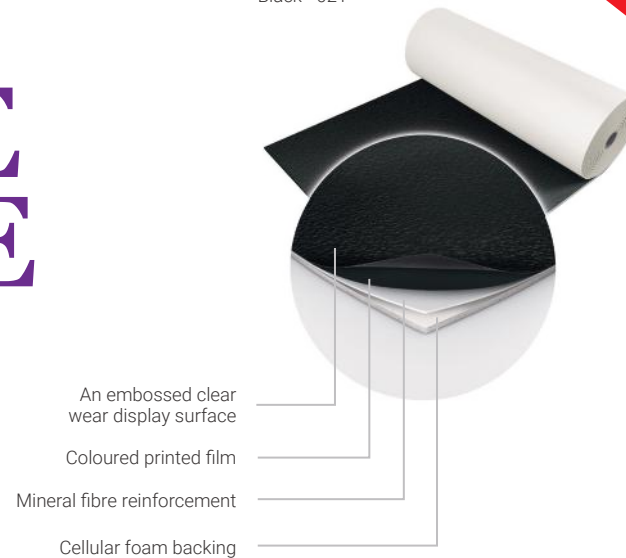
Harlequin Showfloor is perfect for use as a temporary floor for light to medium traffic environments. It has an embossed display surface that helps to prevent scuff marks and its cellular foam backing ensures comfort under foot, helps disguise uneven substrates and provides good impact sound insulation.

Harlequin Showfloor is lightweight, can be laid quickly and stays flat. It can be used over any hard, smooth surface and comes in a range of colours. It is the leading choice for fashion catwalks, exhibition stands, stage sets, events, shows and art displays.

Specification Guide

Permanent or portable	Portable
Roll width	2m
Roll lengths	10m, 15m, 20m, 25m, 30m
Colours	Black, White, Red, Grey
Thickness	2.6mm
Weight	1.7kg/m ²
Fire rating	Bfl-s1 (EN 13501-1)

Black - 021



Grey - 034



White - 019



Red - 043



Harlequin Event Floor Hire

SPRING INTO ACTION

A sprung floor flexes under impact giving a softer feel and helps to protect the dancer from injury. Performers need a sprung floor to absorb the shock of repeated impact to their joints and reduce injury from falls.

With the temporary nature of events, purchasing a sprung floor is not always necessary and budgets don't always allow for it. To meet your needs, Harlequin provides a hire service of its Liberty sprung floor panels so that you can install a floor specifically for your event and then return it once it's finished.

Available for both short-term and long-term hire from a single day to several months.

Specification Guide

Permanent or portable	Both
Floor panel sizes	1m x 1m & 2m x 1m
Minimum floor thickness	37mm (before inclusion of chosen finish)
Weight	12.5kg/m ²
Testing standard	EN 14904-2006
Average shock absorption	67%
Maximum point load (BS EN 1195)	1126kg
Area deflection	12.8%
Rolling load	>1500N
Vertical deformation	4.1mm



Selected Harlequin vinyl performance floor

Clear layered birch plywood with rounded tongue and groove, plus a latch and lock system

Dual density shock damping elastomer blocks at predetermined intervals

A 220g black polymer resin on both sides of the plywood. The wear side has a textured, high grip pattern; the reverse side is smooth.

Dual density shock dampening elastomer pads at predetermined intervals. For portable panels, pads will have clear PVC protection.

Birch plywood with a rounded tongue and groove plus a latch and lock system

Harlequin Liberty

Harlequin Liberty is a modular sprung dance floor panel system, designed for permanent or portable installation. Panels are laid in a brickwork fashion onto the sub-floor, so that cross joins do not coincide. The panels lock securely together using our unique 'one turn of the key' latch and lock mechanism.

Harlequin Liberty can be used wherever a permanent or temporary performance surface is required and is in high demand for touring productions and film shoots.

Our hire service can include

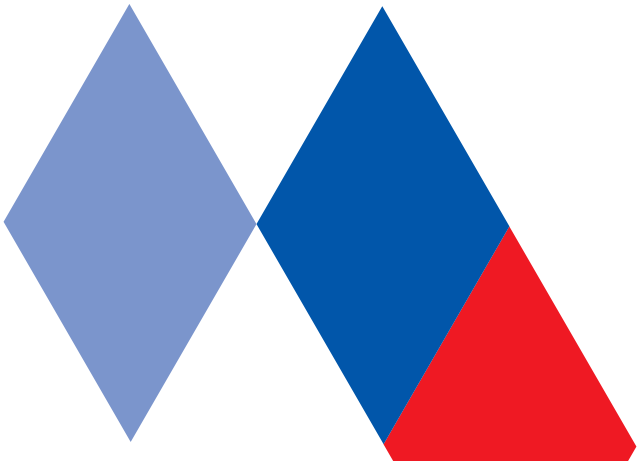
- Delivery
- Installation
- Removal
- Collection

Harlequin Liberty HD

Harlequin Liberty HD is a further development of our renowned Liberty panel system, designed with enhanced durability in mind, for more challenging environments. The panels are overlaid with a black polymer resin. The top surface has a textured high grip pattern and is wear resistant, anti-slip and weatherproof.

Harlequin Liberty HD is suitable for exterior use in covered areas and is widely used for festivals, theme parks and similar applications.

To speak to our highly experienced Sales team about your floor hire needs call **0800 28 99 32**



SOME RECENT HARLEQUIN PROJECTS

Beyonce, Take That, Shawn Mendes, Kylie, Hugh Jackman, Christina Aguilera

These major artists toured globally on Harlequin performance vinyl stage sets.

Client - Stufish | Brilliant Stages



Barbican Centre AI Exhibition

A specially commissioned gloss black Harlequin Hi-Shine vinyl performance floor was selected for its reflective qualities.

Client – Barbican | TeamLab

British Fashion Awards | MTV European Music Awards | BRIT Awards

Harlequin Hi-Shine vinyl performance flooring is seen at the highest profile industry events.

Client – MTV

Kylie | Harlequin Hi-Shine in black © Nick Shepherdson





42nd Street

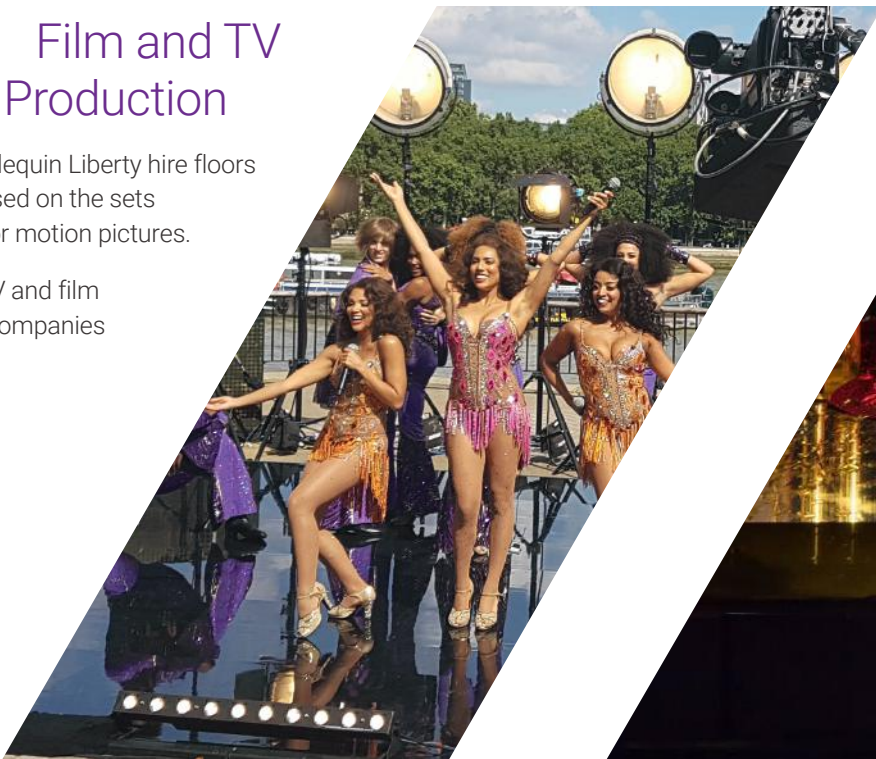
London's West End musical production '42nd Street' rehearsed on Harlequin Liberty sprung panels topped with Harlequin Reversible vinyl.

Client – GL Ltd (Michael Grade and Michael Linnit Gate Ventures)

Film and TV Production

Harlequin Liberty hire floors are used on the sets of major motion pictures.

Client – TV and film production companies



Selfridges | Fenwicks | Aspinall | Hackett London

Harlequin vinyl is used to creative effect in visual merchandising window display

British Harlequin plc

Festival House, Chapman Way, Tunbridge Wells, Kent TN2 3EF

Tel: +44 (0)1892 514888

Fax: +44 (0)1892 514222

Email: enquiries@harlequinfloors.com

Harlequin Europe SA

29 rue Notre-Dame, L-2240 Luxembourg

Tel: +352 46 44 22

Fax: +352 46 44 40

Email: info@harlequinfloors.com

Harlequin Deutschland GmbH

Melanchthonstraße 16, 10557 Berlin, Germany

Tel: +49 (0) 30 340 441 600

Fax: +49 (0) 30 340 441 649

Email: anfrage@harlequinfloors.com

American Harlequin Corporation

1531 Glen Avenue, Moorestown, NJ 08057, USA

Tel: +1 (856) 234 5505

Fax: +1 (856) 231 4403

Email: contact@harlequinfloors.com

Australian Harlequin Pty Ltd

Unit 1, 47 Prime Drive, Seven Hills, NSW 2147, Australia

Tel: +61 (2) 9620 7770

Fax: +61 (2) 9620 7771

Email: auscontact@harlequinfloors.com

Harlequin Asia Limited

2/F The Strand, 49 Bonham Strand, Sheung Wan, Hong Kong

Tel: +852 254 11 666

Fax: +852 254 11 999

Email: hksales@harlequinfloors.com



HARLEQUIN
www.harlequinfloors.com

